

## Overview of the Louisiana Comprehensive Learning Supports System

Children are the living message we send to a time we will not see.

—John W. Whitehead

**Why?** Research provides evidence that students learn best when their academic, emotional, physical, and social needs are met. Educating the whole child, one who is [healthy](#), [safe](#), [engaged](#), [supported](#), and [challenged](#), is a prerequisite to creating a world class educational system. In response to the need for improved cohort graduation rates in Louisiana, a Design Team has been assembled to enhance the prevailing approaches to school improvement which currently emphasize two components:

- Instructional Component – direct facilitation of learning
- Management/Governance – administrative guidance and resource management

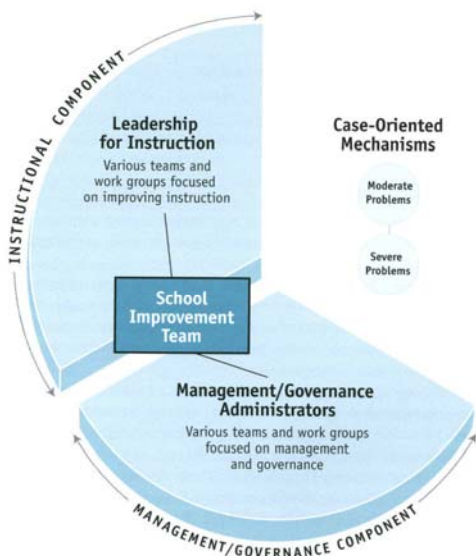
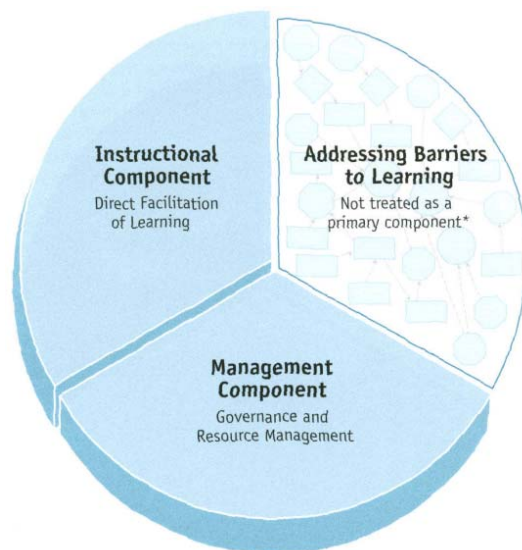
The enhancement emphasizes a *third* component:

- Learning Supports - represents a comprehensive approach focused on overcoming barriers to learning and teaching.

There are many barriers that interfere with ensuring all students have an equal opportunity to succeed at school. Some are associated with the neighborhoods in which they are raised, others are associated with family conditions, and still others are associated with school and peer factors, and for a few there are personal conditions.

A comprehensive learning supports system is essential to ensuring higher academic achievement, closing the achievement gap, and preparing students to be effective citizens in a global market.

**What?** The Louisiana Comprehensive Learning Supports System is a comprehensive and systemic approach to ensuring all students have opportunities to learn. Learning Supports are the resources, strategies, and practices that provide physical, social, and emotional, to directly address barriers to learning and teaching and to re-engage disconnected students.



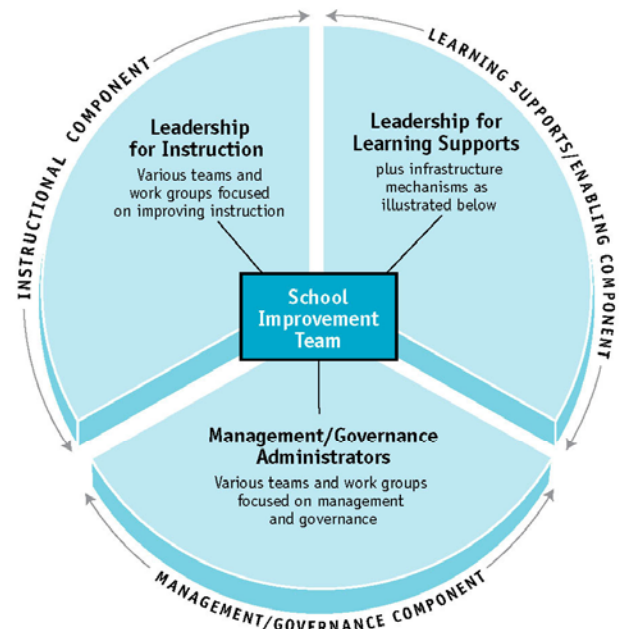
### What a Comprehensive Learning Supports System Is Not

- A case-by-case approach that focuses only on individual students with problems and is unable to meet the needs of many students.
- A fragmented set of student and family services.
- A marginalized and highly restrictive set of student and family services and crisis responses.
- An approach that mostly focuses on enhancing use of outside providers and co-location of services.
- An approach that is unable to meet the needs of most students even with capacity building.

**What a Comprehensive Learning Supports System Is**

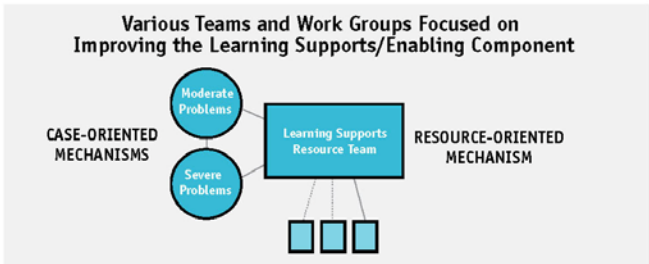
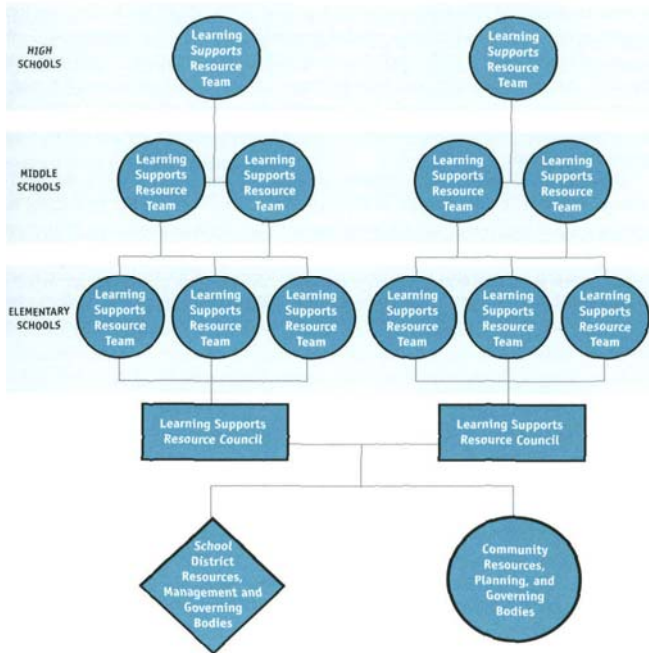
- A resource-oriented approach that uses aggregated school and student data and maps and analyzes resources to clarify what learning supports a school needs.
- An operational infrastructure at a school designed to recommend priorities for alignment and redeployment of resources to develop a comprehensive system of learning supports.
- A continuum of interventions that encompasses prevention and early intervention and is fully integrated into school improvement.
- A system that emphasizes both school-wide and classroom supports, that learns best practices from our High Poverty/High Success schools, and that outreaches to weave in community supports.
- A system that can benefit from regional agency and state-level capacity building.

**INTEGRATED INFRASTRUCTURE AT THE SCHOOL LEVEL**



**ENHANCING A SYSTEM OF LEARNING SUPPORTS BY CONNECTING RESOURCES ACROSS**

- a family of schools
- a district
- the community



**How?** The Comprehensive Learning Supports System provides a framework to guide education agents (state, district, and school) through a process of identifying and eliminating existing barriers to learning by:

- Redistributing existing funds and organizing resources.
- Building and/or enhancing existing learning supports.
- Prioritizing and streamlining efforts and initiatives.
- Transforming fragmented and disjointed programs into cohesive and relevant and sustained supports for learning.

**Outcomes:**

- Increase graduation rates
- Reduce student dropout rates
- Re-engage students in learning
- Reduce number of schools designated as low performing
- Narrow achievement gap
- Eliminate student achievement plateau effect
- Narrow achievement gap

=

**World-Class Education System for All Louisiana Students**